

# QUANTIFIABLE EDGES SUBSCRIBER LETTER

ASSESSING MARKET ACTION WITH INDICATORS AND HISTORY

March 14, 2024

Volume 17 Issue 51

## Market Overview



## Signals Overview

Aggregator	CBI Reading
Flat	2

## Tonight's Research Points

- Nothing compelling triggered on Wednesday.
- During uptrends, opex Friday has often seen selling after the open. We review that a day early since there is not much else to talk about.

## *Short-term Outlook*

### *The Bottom Line*

The Aggregator is neutral. I'm not seeing a compelling reason to get excited about the long or the short side.

**Summary of Current Active Studies (see Letters from listed dates for details)**

Study Date	Description	Time span	Bias	Avg Run-up	Avg DrawDn	Avg DrawDn - 1 Std Dev
<b>Active - Short Term</b>						
March 13, 2024	Russell 2000 down 3 days. SPX 3-day high	1-4 days	Bullish	2.00%	-0.70%	-1.55%
<b>Active - Long Term</b>						
March 13, 2024	Russell 2000 down 3 days. SPX 3-day high	1-10 days	Bullish	3.30%	-1.20%	-2.60%
March 11, 2024	SPX 20-day intraday high and btm 10% cls	1-10 days	Bullish	2.00%	-1.50%	-2.80%
March 4, 2024	Jan & Feb both close positive	1-10 months	Bullish			
February 26, 2024	SPX 50-day high. TNX 50-day high > 4%.	1-15 days	Bearish			
February 12, 2024	SPX 50-day %b > 100	1-50 days	Bullish	4.90%	-4.40%	-9.00%
February 2, 2024	SPX up > 15% last 3 months	1-6 months	Bullish			
January 16, 2024	RUT btm 25% 20-day rng. SPX top 25%	1-40 days	Bullish	5.20%	-3.40%	-6.70%
December 27, 2023	%SPX > 50 moves frm 15% > 90% in 50 dys	1-6 months	Bullish			
November 7, 2023	Whaley ADT5 > 73.66	1-12 months	Bullish	25.20%	-8.10%	
November 6, 2023	Zweig Thrust	1-12 months	Bullish	29.00%	-3.20%	-7.00%
November 6, 2023	Best 6 Months	6 months	Bullish			
May 22, 2023	SPX 50-day high < 1/2 SPX stocks > 50ma	1-12 months	Neutral			
February 2, 2023	SPX Golden Cross	int term	Bullish			
March 14, 2022	Fed Hawkish / QE done	int term	Bearish			

**The Evidence**

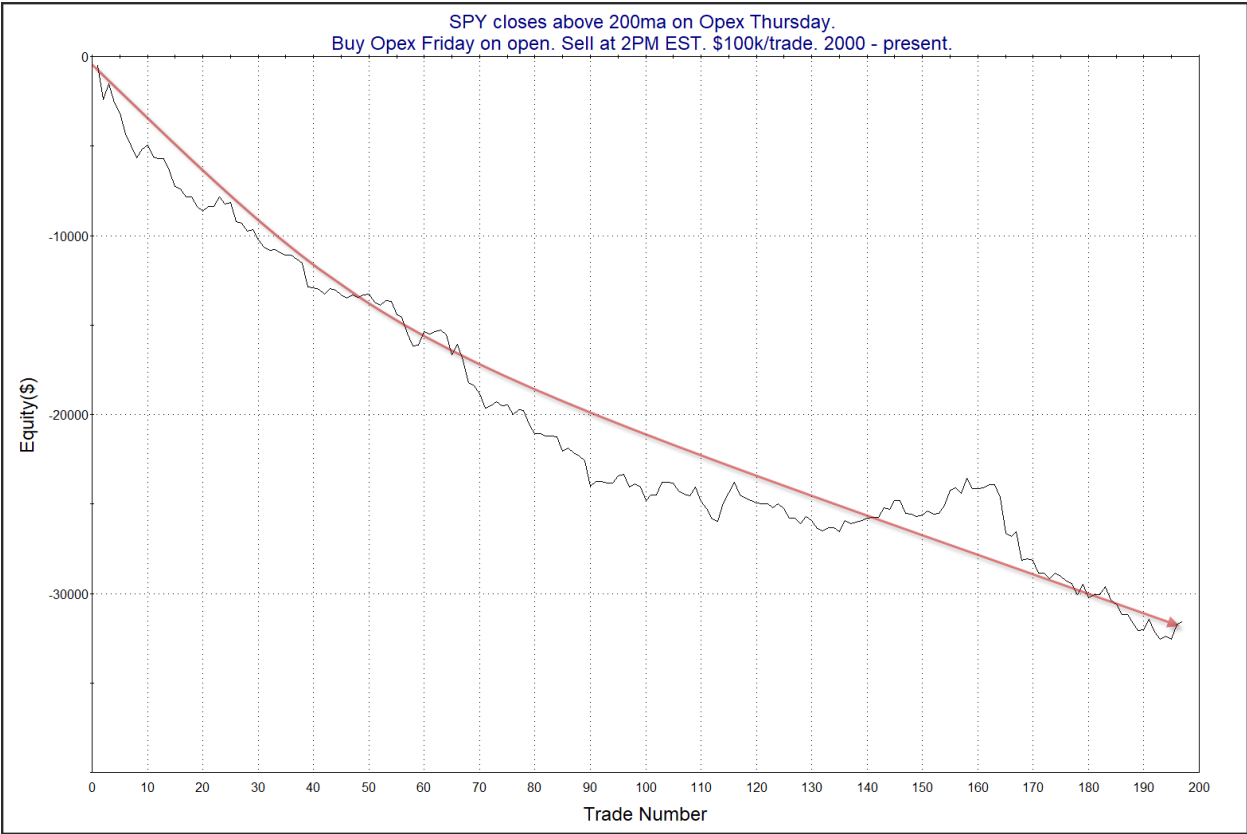
Wednesday saw quiet action. SPX lost 0.2%, the NASDAQ fell 0.5%, and the Russell 2000 rose 0.3%. Breadth was positive with the NYSE Up Issues % coming in at 59% and the Up Volume % at 63%. NYSE total volume rose some from Tuesday's level.

Nothing compelling triggered for tonight. But options expiration occurring on Friday is notable. Options expiration has long been a day that has seen weakness after the opening bell. I last discussed this in the 2/16/24 letter. I have updated that research below.

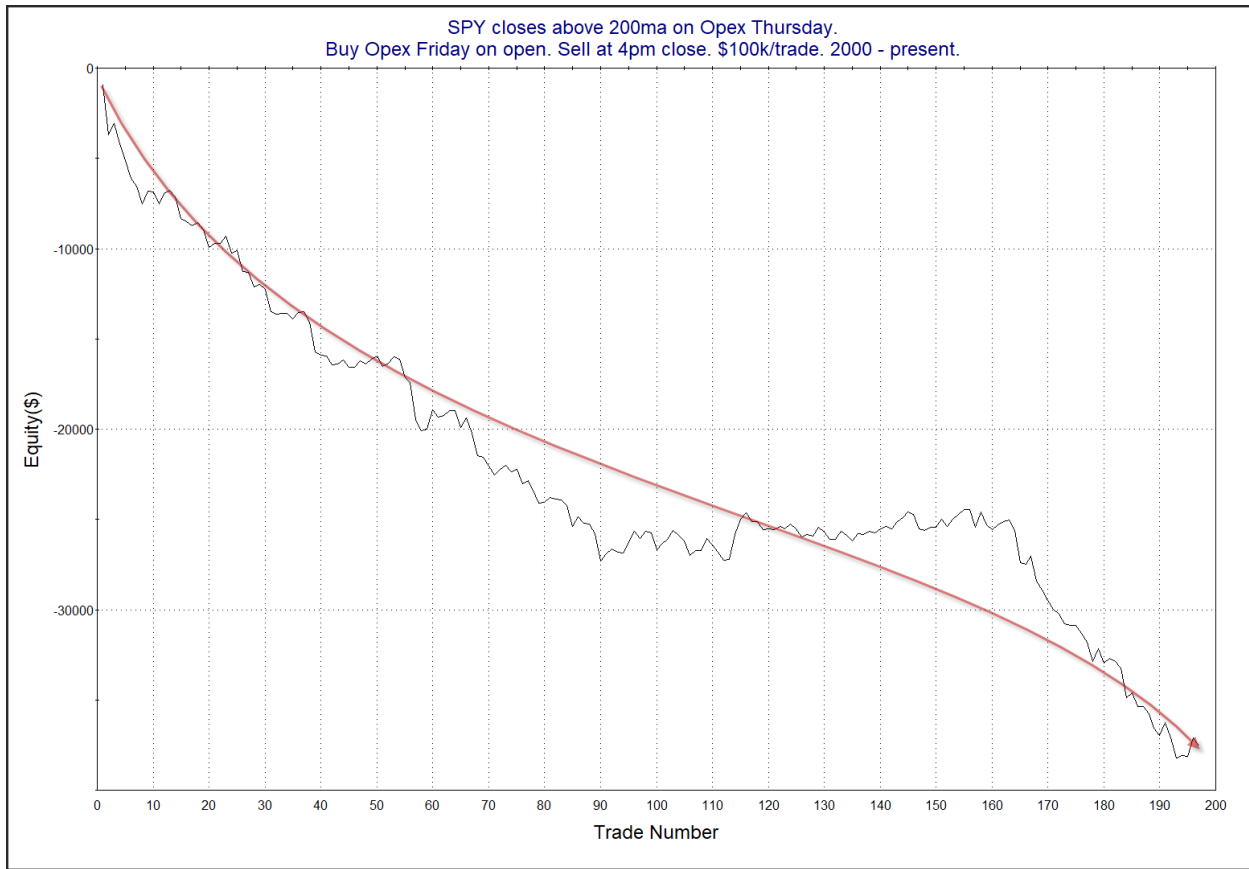
This first study shows results of purchasing SPY at the open and then exiting at different times during the day.

SPY closes above 200ma on Opex Thursday. Buy Opex Friday on open. Sell at time shown on left. \$100k/trade. 2000 - present.												
OE Op-Ex Fri Intra Short: timeofday	All: Net Profit	All: Total Trades	All: Winning Trades	All: Losing Trades	All: % Profitable	All: Max Winning Trade	All: Max Losing Trade	All: Avg Winning Trade	All: Avg Losing Trade	All: Win/Loss Ratio	All: ProfitFactor	All: Avg Trade
1,600	-37,559.81	197	79	118	40.10	1,400.58	-2,746.58	326.48	-536.88	0.61	0.41	-190.66
1,500	-31,736.87	197	80	116	40.61	983.92	-2,315.18	301.43	-481.47	0.63	0.43	-161.10
1,400	-31,592.41	197	68	129	34.52	993.96	-2,000.00	294.56	-400.17	0.74	0.39	-160.37
1,300	-28,247.44	197	70	126	35.53	968.86	-1,324.62	277.76	-378.50	0.73	0.41	-143.39
1,200	-26,777.19	197	69	128	35.03	1,243.06	-1,318.40	264.07	-351.55	0.75	0.40	-135.92
1,100	-21,483.49	197	73	123	37.06	1,020.18	-968.50	220.77	-305.69	0.72	0.43	-109.05
1,000	-17,940.30	197	56	141	28.43	365.47	-629.00	135.84	-181.19	0.75	0.30	-91.07

As you can see, the bearish implications primarily play themselves out by early afternoon. (1000 = 10am EST, 1200 = noon EST, 1400 = 2pm EST, etc.) Most of the downside would have been achieved by exiting at 2pm. Below is a look at a profit curve the 2pm exit.



The strong move from upper left to lower right supports the bearish case. Next is the 4pm exit.

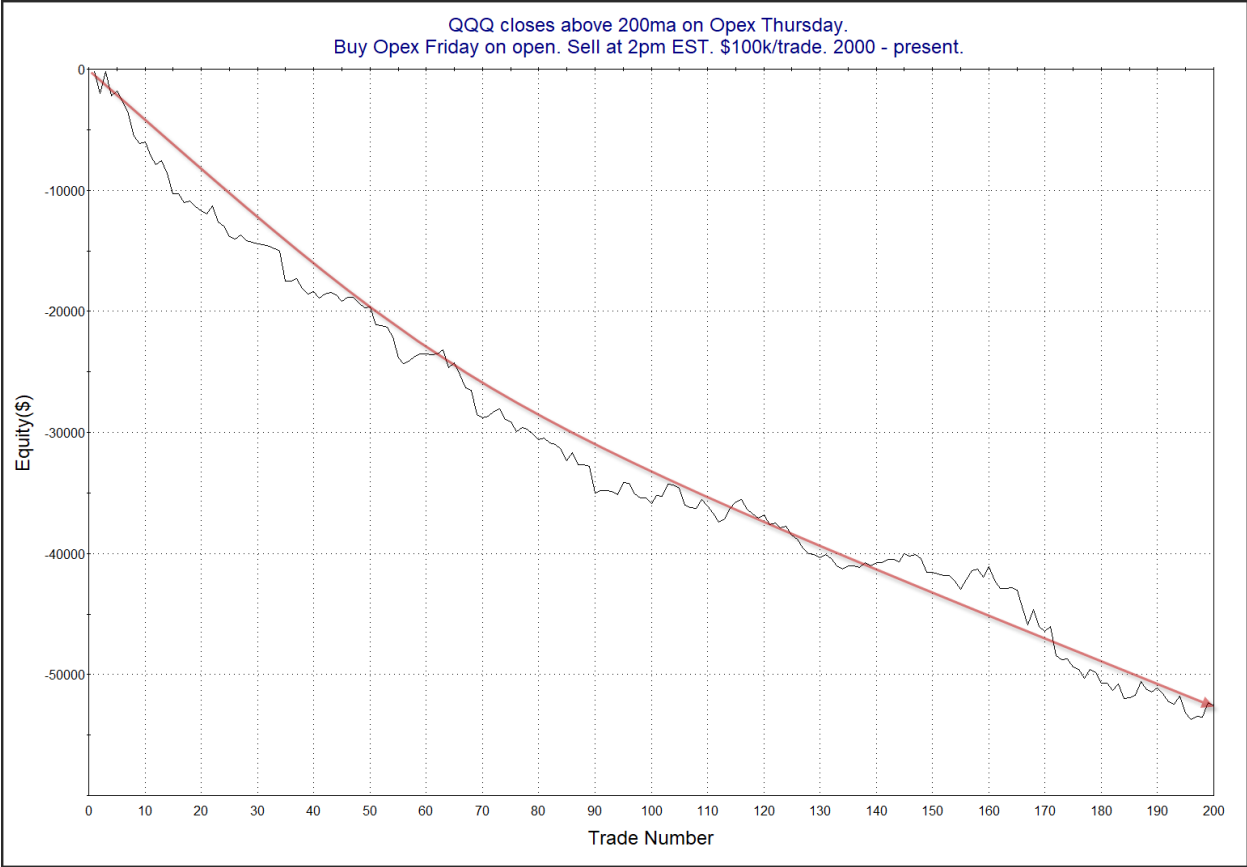


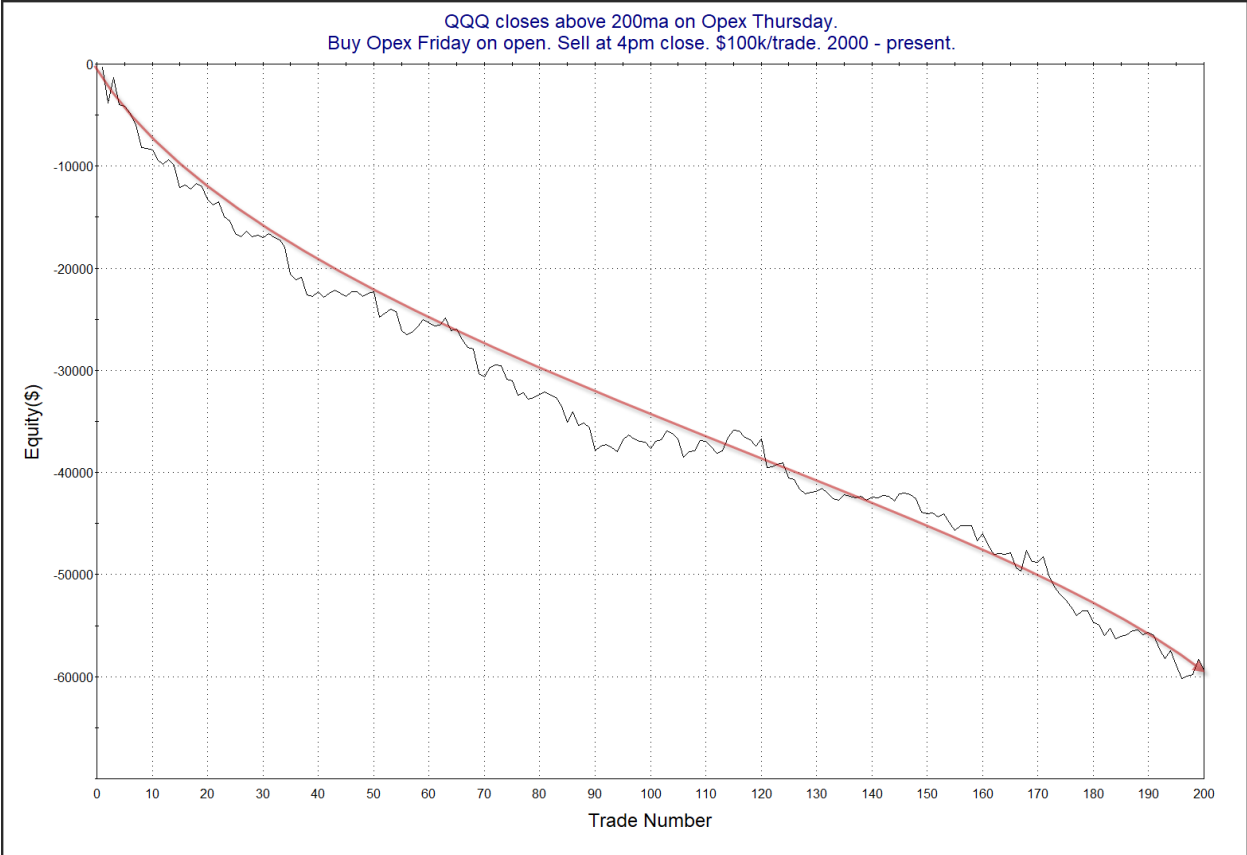
This is also impressive.

QQQ has seen an even stronger tendency to sell off. This can be seen in the table and profit curves below.

QQQ closes above 200ma on Opex Thursday.  
Buy Opex Friday on open. Sell at time shown on left. \$100k/trade. 2000 - present.

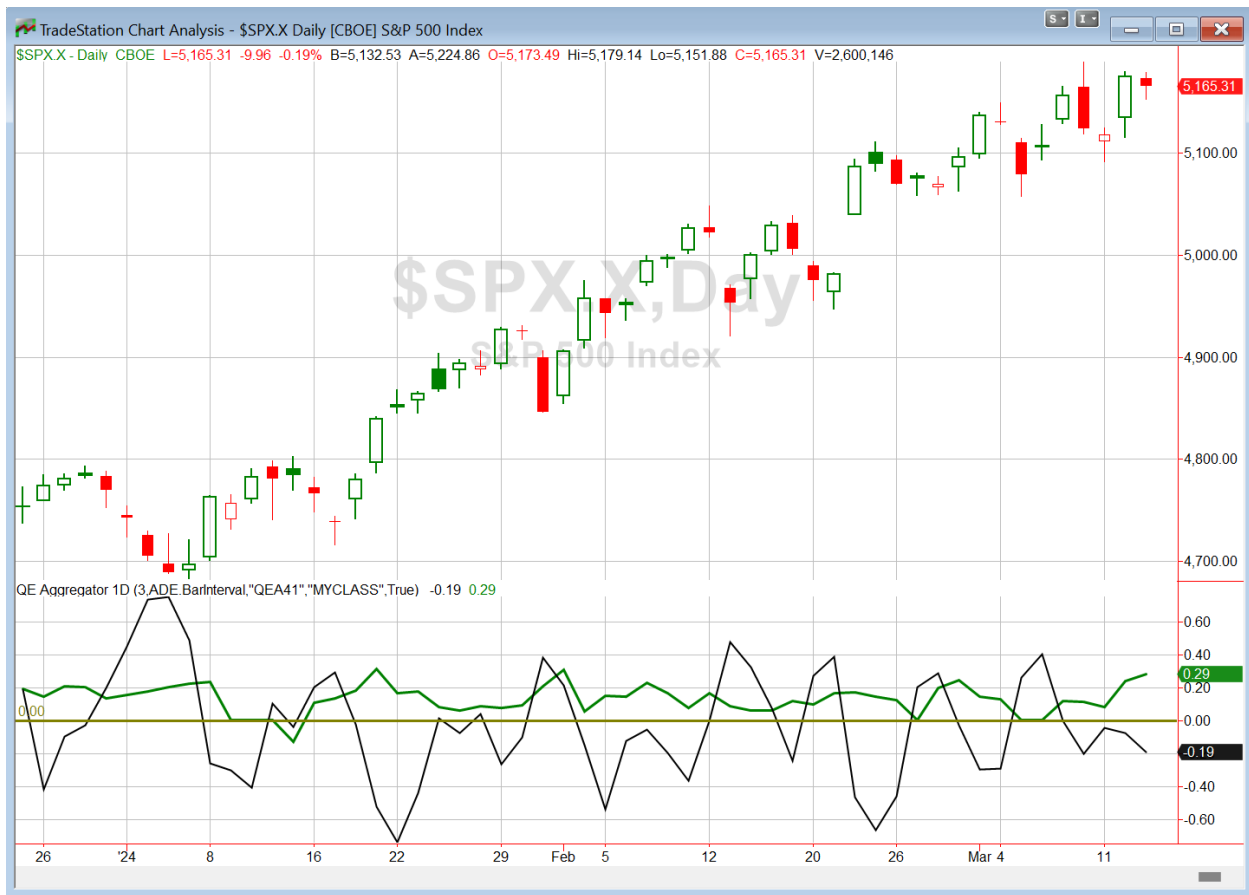
OE Op-Ex Fri Intra Short: timeofday	All: Net Profit	All: Total Trades	All: Winning Trades	All: Losing Trades	All: % Profitable	All: Max Winning Trade	All: Max Losing Trade	All: Avg Winning Trade	All: Avg Losing Trade	All: Win/Loss Ratio	All: ProfitFactor	All: Avg Trade
1,600	-59,307.31	200	78	122	39.00	2,516.00	-3,525.88	449.62	-773.58	0.58	0.37	-296.54
1,500	-52,994.32	200	73	125	36.50	1,739.00	-2,590.84	422.40	-670.63	0.63	0.37	-264.97
1,400	-52,593.31	200	65	132	32.50	1,822.25	-2,431.68	404.32	-597.53	0.68	0.33	-262.97
1,300	-45,908.58	200	69	130	34.50	1,655.75	-2,382.80	368.56	-548.76	0.67	0.36	-229.54
1,200	-45,150.78	200	71	128	35.50	2,488.25	-1,843.43	346.04	-544.69	0.64	0.35	-225.75
1,100	-37,547.00	200	68	131	34.00	1,998.00	-1,936.40	361.03	-474.03	0.76	0.40	-187.74
1,000	-29,056.55	200	63	136	31.50	1,332.00	-1,198.29	218.12	-314.69	0.69	0.32	-145.28





The bearish edge appears alive and well here. It is something traders may want to consider on Friday morning.

I have updated [the Aggregator chart](#) below.



Without any new studies making the active list tonight, the green Aggregator Line held above zero. Positive readings mean net expectations are for upside over the next few days. Meanwhile the black Differential Line remained below zero. The negative Differential Line reading means that SPX is overbought versus recent expectations. So expectations are positive but SPX is overbought. This is considered a neutral configuration. Neutral configurations are visible on the chart whenever both lines close on opposite sides of zero. Therefore, the Aggregator formation stayed flat at the close.

Based on the current list of active studies, expectations are set to remain positive on Thursday. Of course this could easily change if compelling new bearish evidence emerges. Meanwhile, the Differential Pivot will be 5133.95 on Thursday. That is 0.6% below Wednesday's close. Therefore, SPX will need to close down at least 0.6% on Thursday in order to flip from overbought to oversold versus recent expectations.

So the Aggregator is still neutral. Wednesday did not change anything. Evidence continues to point higher, but the market remains overbought. The overbought condition reduces potential reward and increases risk. So despite the bullish evidence, I have no interest in taking on new long index exposure here. I'll continue to wait for a more compelling setup to emerge.

*Intermediate-term Outlook (2 weeks – 2 months) – updated 3/11 – **bullish***

## **Catapult and Capitulative Breadth Statistics**

[Catapult & CBI Presentation Link](#)

### ***Open Catapult Triggers***

MRK – 1/3 @ \$124.05 (bought @ limit)

MRK – 1/3 @ \$122.83 (bought @ limit)

### ***Broad Market Large Cap CBI – 2(MRK-2)***

## **Additional New Trade Ideas**

*A full listing of system triggers can be found at the [numbered systems page](#) each night. I will cherry pick some of my favorite setups from the S&P 100 and ETF lists along with occasional other trade ideas to track below.*

**None tonight.**

## **Current Open Trade Ideas**

<b>Symbol</b>	<b>Entry Date</b>	<b>Entry Price</b>	<b>Current Price</b>	<b>% Gain/Loss</b>	<b>Notes</b>
MRK(1/3)	3/5/2024	\$124.05	\$122.16	-1.52%	Catapult
MRK(1/3)	3/6/2024	\$122.83	\$122.16	-0.55%	Catapult

The author of Quantifiable Edges (QE), Mr. Robert Hanna, is separately affiliated with a registered investment adviser in the States of Washington, California, Colorado, Texas, Massachusetts, and Louisiana, Eastsound Capital Advisors, LLC (ECA) d.b.a. Capital Advisors 360. ECA may not transact business in states where it is not appropriately registered, excluded or exempted from registration. Individualized responses to persons that involve either the effecting of transaction in securities, or the rendering of personalized investment advice for compensation, will not be made without registration or exemption. Advisory clients of ECA utilizing the approaches developed by Mr. Hanna will receive the QE newsletter from QE at no charge. ECA is not otherwise affiliated with QE, and neither endorses nor warrants the content of this site, the QE newsletter(s), any embedded advertisement, nor any linked resource herein.

This report has been prepared by Quantifiable Edges, LLC and is provided for information purposes only. Under no circumstances is it to be used or considered as an offer to sell, or a solicitation of any offer to buy securities. While information contained herein is believed to be accurate at the time of publication, we make no representation as to the accuracy or completeness of any data, studies, or opinions expressed and it should not be relied upon as such. Robert Hanna, Quantifiable Edges, LLC or clients of Quantifiable Edges, LLC may have positions or other interests in securities (including derivatives) directly or indirectly which are the subject of this report. This report is provided solely for the information of Quantifiable Edges, LLC clients and prospects who are expected to make their own investment decisions without reliance upon this report. Neither Quantifiable Edges, LLC nor any officer or employee of Quantifiable Edges, LLC accepts any liability whatsoever for any direct or consequential loss arising from any use of this report or its contents. This report may not be reproduced, distributed or published by any recipient for any purpose without the prior express consent of Quantifiable Edges, LLC.

Copyright © 2024 Quantifiable Edges, LLC.